

Information on your new Community Park



Open to the public Friday 12th June 2015

Adelaide Brighton Cement is committed to ensuring a sustainable future for the Birkenhead park, located on the corner of Alfred and Hargave Street.



Adelaide Brighton Cement Ltd

Phone: (08) 8300 0300

A/Hours: (08) 8300 0520

BirkenheadCommunity@adbri.com.au

62 Elder Road, Birkenhead SA 5015

www.adelaidebrightoncommunity.com.au

Adelaide Brighton Cement is pleased to announce the opening of the multi purpose community park which will provide for play, recreation and dog exercise. The park has also incorporated the added feature of providing localised flood relief through an engineered designed grassed detention basin that will capture stormwater from Alfred street during flooding events.

After an extensive process of community consultation, the final design for the park was developed in late 2014, with construction beginning in April 2015.

The park includes a range of features including irrigated grass recreation lawns, a paved entry plaza, two new shelters, seating and a drinking fountain with dog bowl. Over 2000 new native trees and plants have been planted, with logs and limestone boulders providing a natural edge to the park and includes a series of new bins and a dog bag dispenser unit.

We recognise that the Community Park is an important piece of open space in the Birkenhead community and are proud to have created a park which will benefit a wide range of community members. We welcome you to start using the park on or after the opening date.

Please keep clean and tidy for all to enjoy.

Key Features of your Community Park

DEALING WITH STORM WATER

The map below and text adjacent explain the detention basin system.



UNDERGROUND DRAIN

Flood waters can enter and exit the basin through a new underground drain extension.

A discharge control pit ensures the basin will only fill during times of flood. As the water level within the street drainage system falls below the water level in the basin, a flap gate within the discharge control pit will open, enabling the water in the basin to return to the street drainage system. Low level rainfall events will not spill into the basin.

OVERLAND FLOW PATH

In severe flood events, flood waters ponding in the road way can spill into the basin across the footpath.

OTHER PARK FEATURES



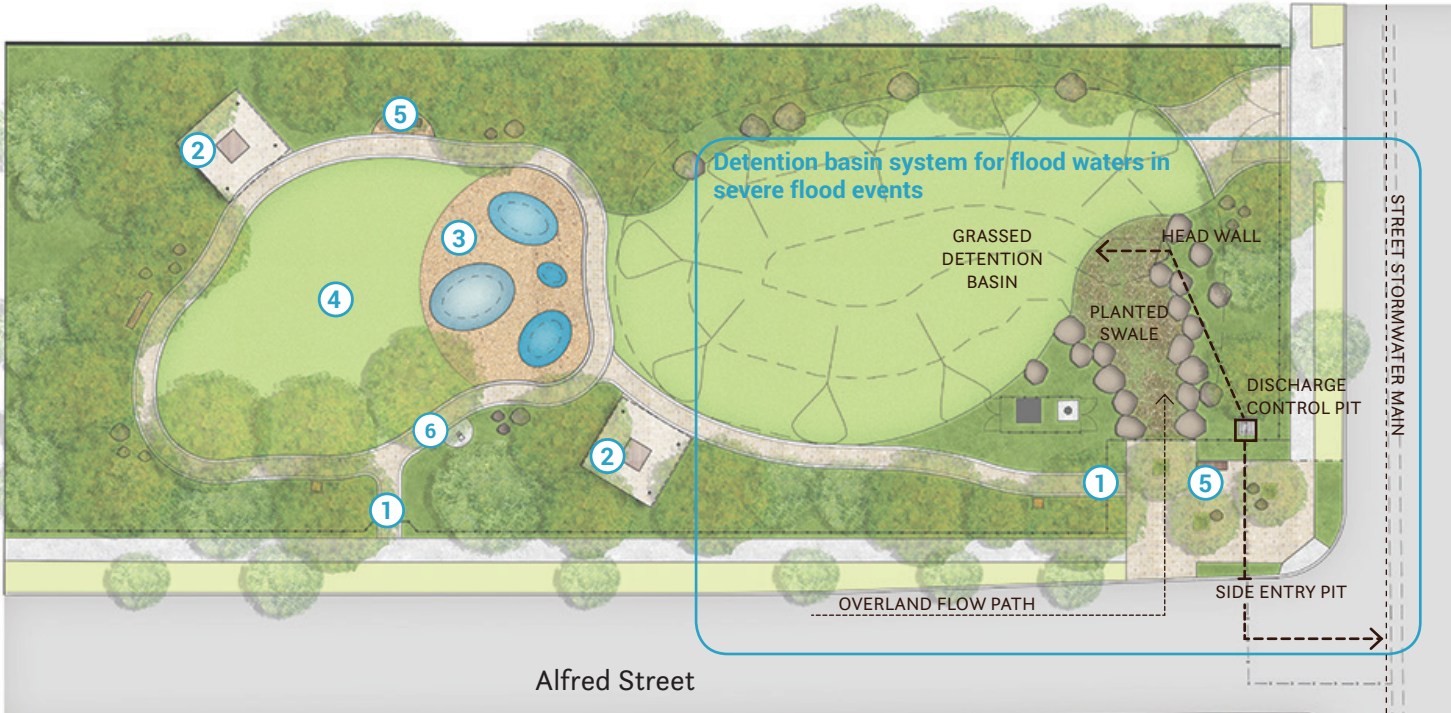
Shade Shelters



Rubber Play Mounds



Native Plantings



- 1 Entry Gate
- 2 Shelter
- 3 Rubber Play Mounds
- 4 Lawn
- 5 Seats
- 6 Drinking Fountain

NOT TO SCALE